

UPPER BROADWAY BIKE LANES AND STORM DRAIN PROJECTS

CIP # 41508 and #42004



CONSTRUCTION UPDATE #1

February 22, 2020

Hi Everyone!

This is our first update to the community regarding the Upper Broadway Bike Lanes and Storm Drain Projects. For anyone who may not know what this project entails, it will construct new bicycle and pedestrian facilities along Broadway from Schnell School Road to Point View Drive, allowing a safer non-vehicular method of travel along the Broadway corridor. It also addresses critical infrastructure as well such as sewer and storm drain improvements as well as roadway improvements. Construction in the form of initial tree clearing began the last week of January, and these updates will continue to be sent via email to interested parties and posted on the City of Placerville's website to keep the community up-to-date on the status of this project. Thanks in advance for everyone's understanding and patience during construction.

Previous Period

- Project Bid and Award by City Council on December 10, 2019.
- Project submittals and preparation.

Current Period

- Preconstruction bird survey was completed prior to tree removal.
- Tree removal operations have been completed along Upper Broadway from Point View Drive to Smith Flat Road
- Underground storm drain and sewer line work will begin from the Schnell School Road intersection to the Golden Waffle Café parking lot.
- Construction area signs will be installed throughout the project limits along with the Project Funding Signs
- Storm Water Pollution Prevention (SWPP) measures will be installed in the current work area along with maintenance of previously installed project limit fencing.
- Traffic control measures will be in place to allow pedestrian and vehicular access throughout the work areas and construction site, but **there may be minor delays. Please drive slowly and carefully!**
- **Businesses near the project site and their access will remain open and will continue to remain open during all stages of construction.**

Upcoming Period

- Work operations will progress towards the east end on Upper Broadway and consist of roadway removal, grading and replacement.
- Sewer line repair work will be performed at various locations along the length of the project.
- Construction of retaining walls for roadway widenings.
- Traffic control measures will be in place to keep pedestrian and vehicular access through the work areas, but there may be minor delays.
- **Businesses near the project site and their access will remain open and will continue to remain open during all stages of construction.**

Thank you!

UPPER BROADWAY BIKE LANES AND STORM DRAIN PROJECTS

CIP # 41508 and #42004



Important Information

Please see attachment for current work area limits and dates and plan your travel routes accordingly.

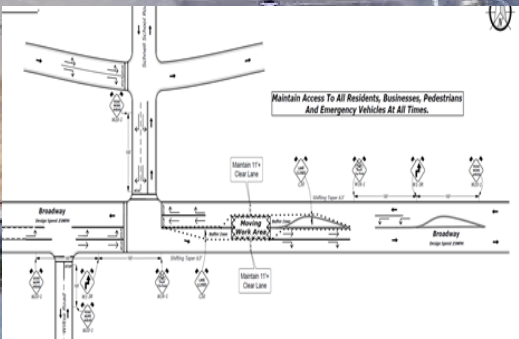
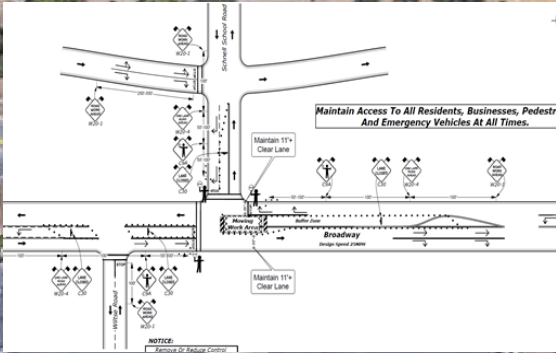
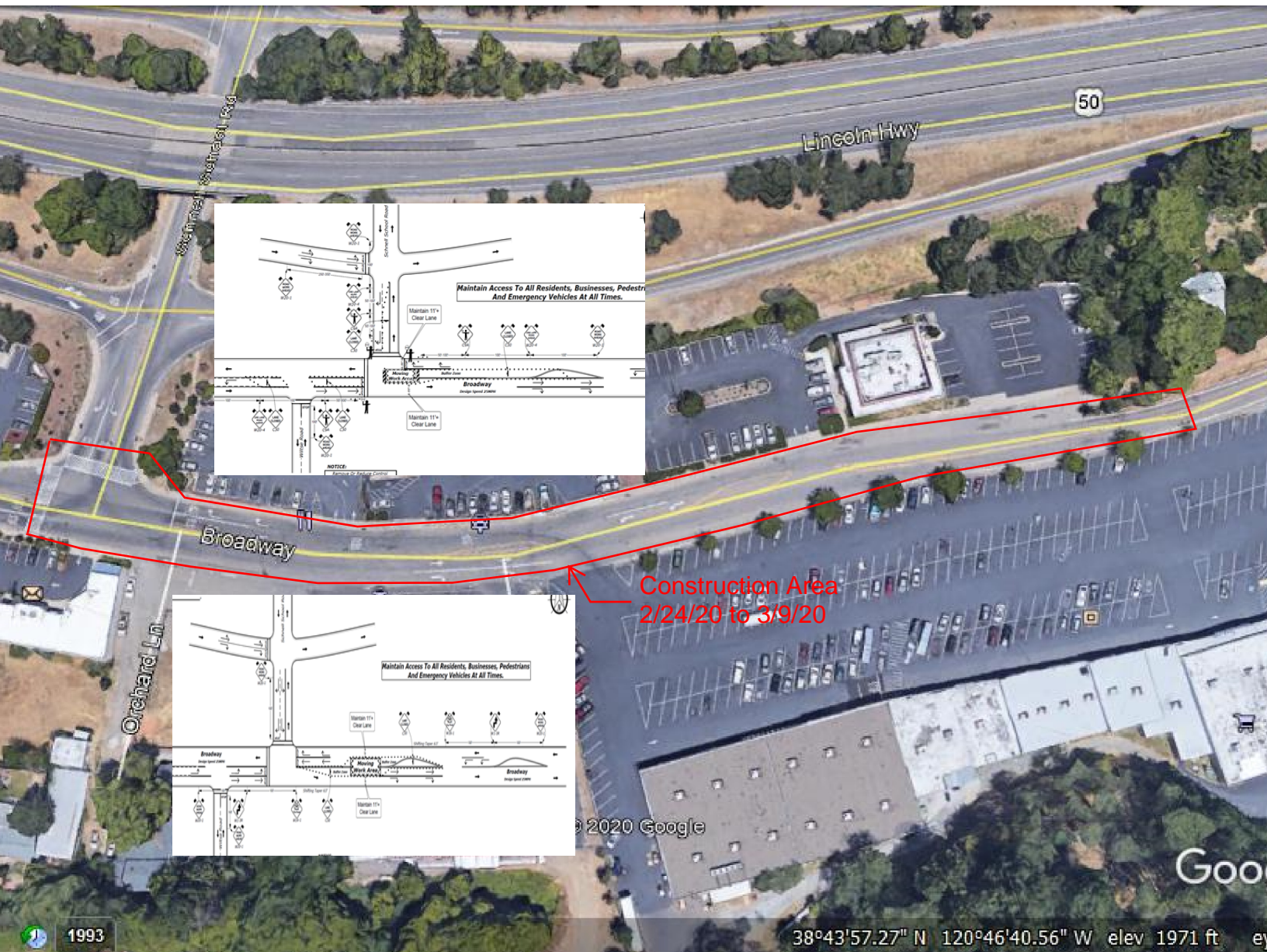
Contacts

Howard Zabell, Resident Engineer	Dewberry Drake Haglan	(916) 363-4210	hzabell@dewberry.com
Dion Carr, Assistant RE	Dewberry Drake Haglan	(916) 206-7912	dcarr@dewberry.com
Rebecca Neves, City Engineer	City of Placerville	(530) 642-5250	rneves@cityofplacerville.org

Please feel free to contact us directly with any questions or concerns.

Thank you for your patience as we work towards delivering another great project for our community!

Thank you!



Construction Area
2/24/20 to 3/9/20

© 2020 Google

Go

1993

38°43'57.27" N 120°46'40.56" W elev 1971 ft