

WESTERN PLACERVILLE INTERCHANGES PHASE 2 PROJECT

CIP # 41828



CONSTRUCTION UPDATE #13

August 14th, 2018

Hi Everyone!

This is our thirteenth update to the community regarding the Western Placerville Interchanges Phase 2 Project. Construction began the first week in February, and these updates will continue to be sent via email to interested parties and posted on the City of Placerville's website to keep the community up-to-date on the status of this project. Thanks in advance for everyone's understanding and patience during construction.

Previous Period

- Comcast completed their underground work and put in a request to splice in their new service line. Affected parties were notified of the switch-over. The switch-over was originally scheduled for August 8th, but has now been rescheduled for the night of August 29th.
- Structural backfill was placed behind the retaining wall.
- Mass grading of earthwork continued throughout the project limits, specifically new forni road.
- Construction of an access road for a future phase of the project began near the County Jail driveway.
- Storm drain was installed in the future along new Forni road.
- Work on water pollution control measures and adherence to the project SWPPP continued.
- Forni Road was closed beginning April 30th between Diamond Pacific and the County Jail driveway. See attachment for details.
- Complete access was maintained on the El Dorado Trail through May 8, 2018. The El Dorado Trail was closed on May 9th. See attachment for details.

Current Period

- Mass grading of earthwork continued throughout the project limits, specifically new forni at the County Jail intersection.
- Construction of an access road for Stage 1B was completed. The County Jail is now being accessed per the attached exhibit.
- Storm drain installation continue along new Forni Road.
- The retaining wall structural backfill was completed.
- Trenching and installation of new EID water main.
- Work on water pollution control measures and adherence to the project SWPPP.
- **Businesses near the project site and their access to Forni Road remain open and will continue to remain open during all stages of construction.**

Following Period

- Comcast CATV switch over is scheduled for the night of August 29th
- Mass grading of earthwork will continue throughout the project limits.
- Storm drain installation will continue.
- Trenching and installation of new EID water main.
- Testing and disinfection of EID water main.
- Concrete barrier will be constructed on top of retaining wall.
- Electrical work along new Forni Road.

Thank you!

WESTERN PLACERVILLE INTERCHANGES PHASE 2 PROJECT

CIP # 41828



- Aggregate base will be placed in new Forni road beginning on the west end of Stage 1 near Diamond Pacific.
- As new ground is opened up, additional water pollution control measures will be implemented as necessary per the project SWPPP.
- **Access to the County Jail will be preserved at all times.** See attachments for details.

Important Information

Stage 1 construction began Monday, April 30th. Full closure of the El Dorado Trail and Forni Road between Diamond Pacific and the County Jail driveway began May 9. Now that the trail is closed, there is no through access to Forni Rd., however access to the County Jail (from Ray Lawyer Drive and East Forni Rd) will be maintained at all times. **Stage 1B began 8-8-18. See attachments for details.**

Additional traffic control may be necessary outside of stage 1 limits, so keep an eye out for shoulder and/or lane closures east of the County Jail driveway and look for signage showing planned closures and detours.

Keep in mind that the right shoulder of eastbound US50 is now closed since the k-rail is placed.

Please see attachment for Stage 1 closure limits and dates and plan your travel routes accordingly. Pedestrian and bicycle traffic on the El Dorado Trail are encouraged to use alternate routes.

You may have noticed construction signage stating "Road work next 4 miles" on US Highway 50. These signs are for a separate Caltrans SB 1 ("the gas tax") highway maintenance projects. One of the active projects includes a deck replacement for the Mosquito Road overcrossing on US Highway 50. The scope of the project necessitated Caltrans closing the westbound on-ramp at Mosquito Road and the eastbound off-ramp at Broadway. This work is on-going and estimated to be completed at the end of October.

Stay tuned and alert for all construction traffic safety signage, **Slow for the Cone Zone!** We want everyone to make it home to their loved ones at the end of the day.

Contacts

Howard Zabell, Resident Engineer	Drake Haglan	(916) 363-4210	hzabell@drakehaglan.com
Elias Travis, Assistant RE	R.E.Y. Engineers	(916) 206-7912	etravis@reyengineers.com
Rebecca Neves, City Engineer	City of Placerville	(530) 642-5250	rneves@cityofplacerville.org

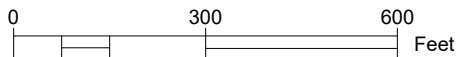
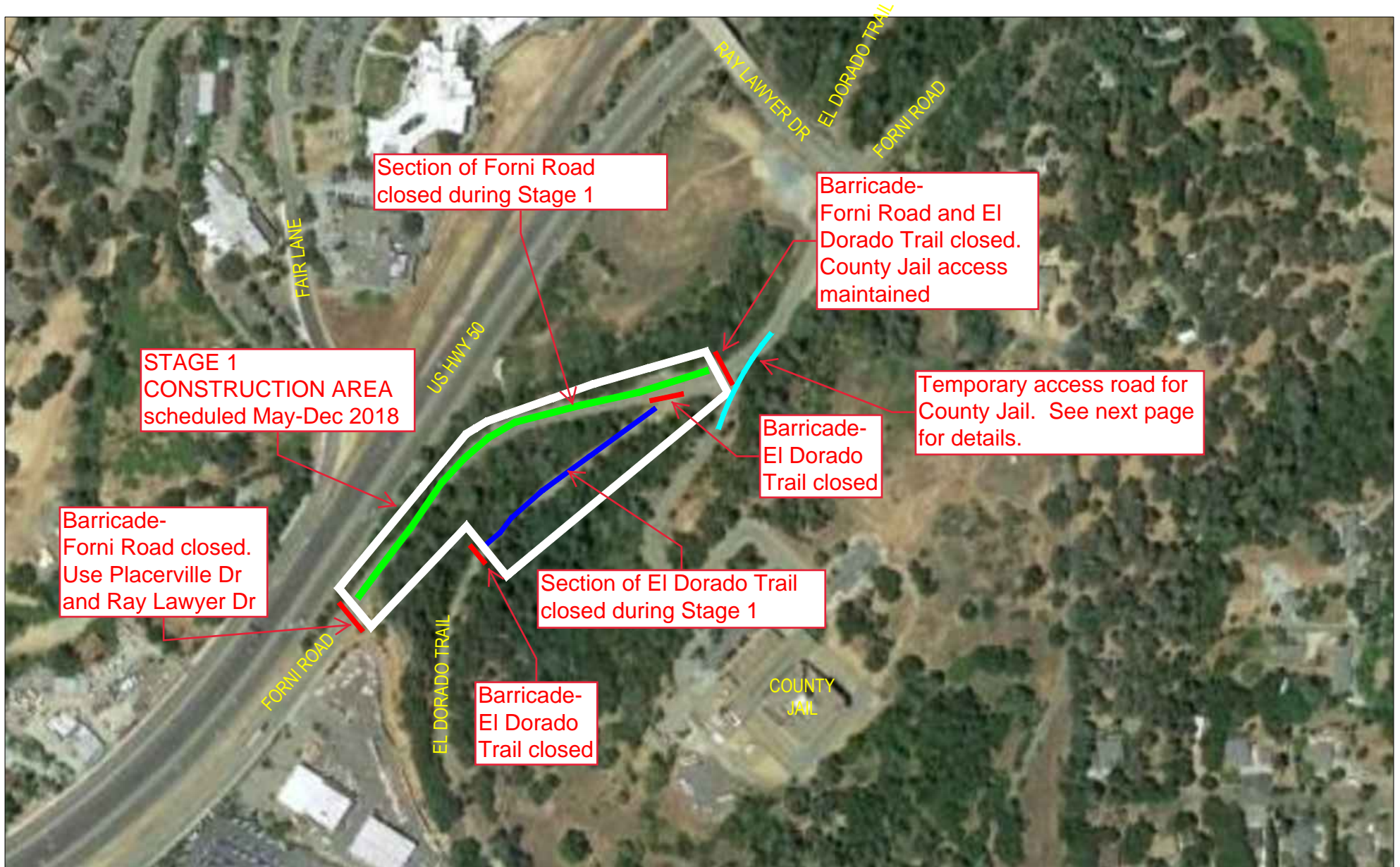


Pictured: Trenching for new 12" ductile iron water mainline

Thank you!

Western Placerville Interchanges Phase 2 Project - CIP #41828

Site Map - Beginning August 8



Western Placerville Interchanges Phase 2 Project - CIP #41828

STAGE 1B - COUNTY JAIL ACCESS - SCHEDULED MID-AUGUST THROUGH OCTOBER 2018

