

# WESTERN PLACERVILLE INTERCHANGES PHASE 2 PROJECT

CIP # 41828



## CONSTRUCTION UPDATE #14

August 28<sup>th</sup>, 2018

Hi Everyone!

This is our fourteenth update to the community regarding the Western Placerville Interchanges Phase 2 Project. Construction began the first week in February, and these updates will continue to be sent via email to interested parties and posted on the City of Placerville's website to keep the community up-to-date on the status of this project. Thanks in advance for everyone's understanding and patience during construction.

### Previous Period

- Comcast completed their underground work and put in a request to splice in their new service line. Affected parties were notified of the switch-over. The switch-over was originally scheduled for August 8<sup>th</sup>, but has now been rescheduled for the night of August 29<sup>th</sup>.
- Mass grading of earthwork throughout the project limits, specifically Forni Road at the County Jail intersection.
- Construction of an access road for Stage 1B was completed. The County Jail is now being accessed per the attached exhibit.
- Storm drain installation along Forni Road and the future park and ride lot.
- The retaining wall structural backfill was completed.
- Trenching and installation of new EID water main.
- Work on water pollution control measures and adherence to the project SWPPP.
- Forni Road was closed beginning April 30<sup>th</sup> between Diamond Pacific and the County Jail driveway. See attachment for details.
- Complete access was maintained on the El Dorado Trail through May 8, 2018. The El Dorado Trail was closed on May 9<sup>th</sup>. See attachment for details.

### Current Period

- Electrical conduit was installed for street lights along Forni Road.
- Aggregate base was placed in Forni road beginning on the west end of Stage 1 near Diamond Pacific.
- Curb, gutter & sidewalk was formed and poured along Forni Road.
- Storm drain installation continued.
- Trenching and installation of new EID water main continued.
- Work on water pollution control measures and adherence to the project SWPPP continued.
- **Businesses near the project site and their access to Forni Road remain open and will continue to remain open during all stages of construction.**

### Following Period

- Comcast CATV switch over is scheduled for the night of August 29<sup>th</sup>.
- Storm drain installation will continue.
- Trenching and installation of new EID water main will continue.
- Testing and disinfection of EID water main.
- Concrete barrier will be constructed on top of retaining wall.
- Electrical work along new Forni Road will continue.

*Thank you!*

# WESTERN PLACERVILLE INTERCHANGES PHASE 2 PROJECT

CIP # 41828



- Aggregate base placement will continue on Forni Road.
- Curb, gutter & sidewalk work will continue.
- As new ground is opened up, additional water pollution control measures will be implemented as required per the project SWPPP.
- **Access to the County Jail will be preserved at all times.** See attachments for details.

## **Important Information**

Stage 1 construction began Monday, April 30<sup>th</sup>. Full closure of the El Dorado Trail and Forni Road between Diamond Pacific and the County Jail driveway began May 9. Now that the trail is closed, there is no through access to Forni Rd., however access to the County Jail (from Ray Lawyer Drive and East Forni Rd) will be maintained at all times.

Stage 1B construction began 8-8-18. See attachments for details.

Additional traffic control may be necessary outside of stage 1 limits, so keep an eye out for shoulder and/or lane closures east of the County Jail driveway and look for signage showing planned closures and detours.

Keep in mind that the right shoulder of eastbound US50 is now closed since the k-rail is placed.

Please see attachments for Stage 1 closure limits and dates and plan your travel routes accordingly. Pedestrian and bicycle traffic on the El Dorado Trail are encouraged to use alternate routes.

Stay tuned and alert for all construction traffic safety signage, **Slow for the Cone Zone!** We want everyone to make it home to their loved ones at the end of the day.

**\*\*FUN FACT – Did you know this project includes extensive landscaping and planting over 900 native plants as part of the improvements? Learn more at the project website: <https://www.cityofplacerville.org/western-placerville-interchanges-phase-2-cip-407051>**

## **Contacts**

Howard Zabell, Resident Engineer	Drake Haglan	(916) 363-4210	hzabell@drakehaglan.com
Elias Travis, Assistant RE	R.E.Y. Engineers	(916) 206-7912	etravis@reyengineers.com
Rebecca Neves, City Engineer	City of Placerville	(530) 642-5250	rneves@cityofplacerville.org

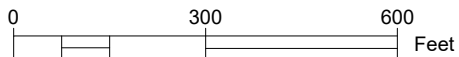
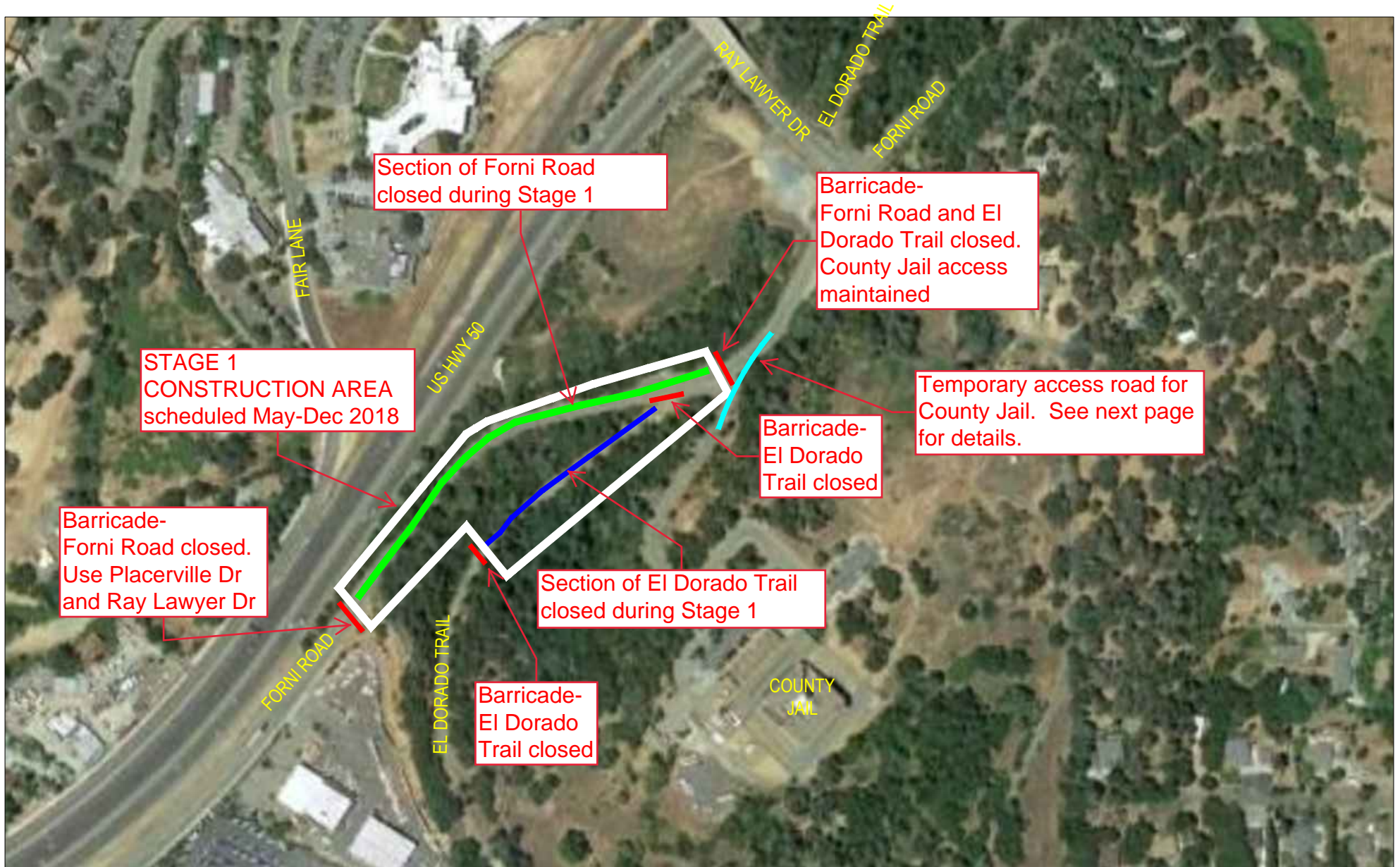
*Pictured: New Curb,  
Gutter & Sidewalk along  
realigned Forni Road*



*Thank you!*

# Western Placerville Interchanges Phase 2 Project - CIP #41828

Site Map - Beginning August 8





# Western Placerville Interchanges Phase 2 Project - CIP #41828

STAGE 1B - COUNTY JAIL ACCESS - SCHEDULED MID-AUGUST THROUGH OCTOBER 2018

