

WESTERN PLACERVILLE INTERCHANGES PHASE 2 PROJECT

CIP # 41828



CONSTRUCTION UPDATE #15

September 10th, 2018

Hi Everyone!

This is our fifteenth update to the community regarding the Western Placerville Interchanges Phase 2 Project. Construction began the first week in February, and these updates will continue to be sent via email to interested parties and posted on the City of Placerville's website to keep the community up-to-date on the status of this project. Thanks in advance for everyone's understanding and patience during construction.

Previous Period

- Mass grading of earthwork throughout the project limits, specifically near the stockpile.
- Electrical conduit was installed for street lights along Forni Road.
- Aggregate base was placed in Forni road beginning on the west end of Stage 1 near Diamond Pacific.
- Curb, gutter & sidewalk was formed and poured along Forni Road.
- Storm drain installation.
- Trenching and installation of new EID water main.
- Work on water pollution control measures and adherence to the project SWPPP.
- Forni Road was closed beginning April 30th between Diamond Pacific and the County Jail driveway. See attachment for details.
- Complete access was maintained on the El Dorado Trail through May 8, 2018. The El Dorado Trail was closed on May 9th. See attachment for details.

Current Period

- Curb, gutter & sidewalk was formed and poured along Forni Road.
- Lean concrete base and concrete bus pad were formed and poured.
- Concrete barrier was constructed on top of the retaining wall on Forni Road.
- Storm drain installation continued.
- Trenching and installation of new EID water main was completed for Stage 1.
- Work on water pollution control measures and adherence to the project SWPPP continued.
- **Businesses near the project site and their access to Forni Road remain open and will continue to remain open during all stages of construction.**

Following Period

- Comcast CATV switch over has been postponed. The new date has not yet been determined, however all CATV services remain connected, with no outages anticipated.
- Storm drain installation will continue.
- Testing and disinfection of EID water main.
- Electrical work along new Forni Road will continue.
- Aggregate base placement will continue on Forni Road.
- Curb, gutter & sidewalk work will continue.
- As new ground is opened up, additional water pollution control measures will be implemented as required per the project SWPPP.
- **Access to the County Jail will be preserved at all times.** See attachments for details.

Thank you!

WESTERN PLACERVILLE INTERCHANGES PHASE 2 PROJECT

CIP # 41828



Important Information

Temporary Closure of the El Dorado Trail and Forni Road between Diamond Pacific and the County Jail driveway began May 9. With the trail closure for construction, there is no through access to Forni Rd., however access to the County Jail (from Ray Lawyer Drive and East Forni Rd) will be maintained at all times.

Stage 1B construction began 8-8-18. See attachments for details. Additional traffic control may be necessary outside of stage 1 limits, so keep an eye out for shoulder and/or lane closures east of the County Jail driveway and look for signage showing planned closures and detours.

Keep in mind that the right shoulder of eastbound US50 is now closed since the k-rail is placed.

Please see attachments for Stage 1 closure limits and dates and plan your travel routes accordingly. Pedestrian and bicycle traffic on the El Dorado Trail are encouraged to use alternate routes.

Stay tuned and alert for all construction traffic safety signage, **Slow for the Cone Zone!** We want everyone to make it home to their loved ones at the end of the day.

***FUN FACT – Did you know this project includes construction of a much needed El Dorado Transit Park and Ride facility? This new facility will construct a 150 stall park and ride lot on the south side of US Highway 50 where it can serve such nearby community destinations as the El Dorado County Fair Grounds, Placerville Drive businesses, El Dorado Trail, and the El Dorado County Government Center as well as provide a connecting location for local and commuter transit services in the county and to Sacramento.*

Contacts

| | | | |
|----------------------------------|---------------------|----------------|------------------------------|
| Howard Zabell, Resident Engineer | Drake Haglan | (916) 363-4210 | hzabell@drakehaglan.com |
| Elias Travis, Assistant RE | R.E.Y. Engineers | (916) 206-7912 | etravis@reyengineers.com |
| Rebecca Neves, City Engineer | City of Placerville | (530) 642-5250 | rneves@cityofplacerville.org |

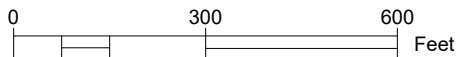
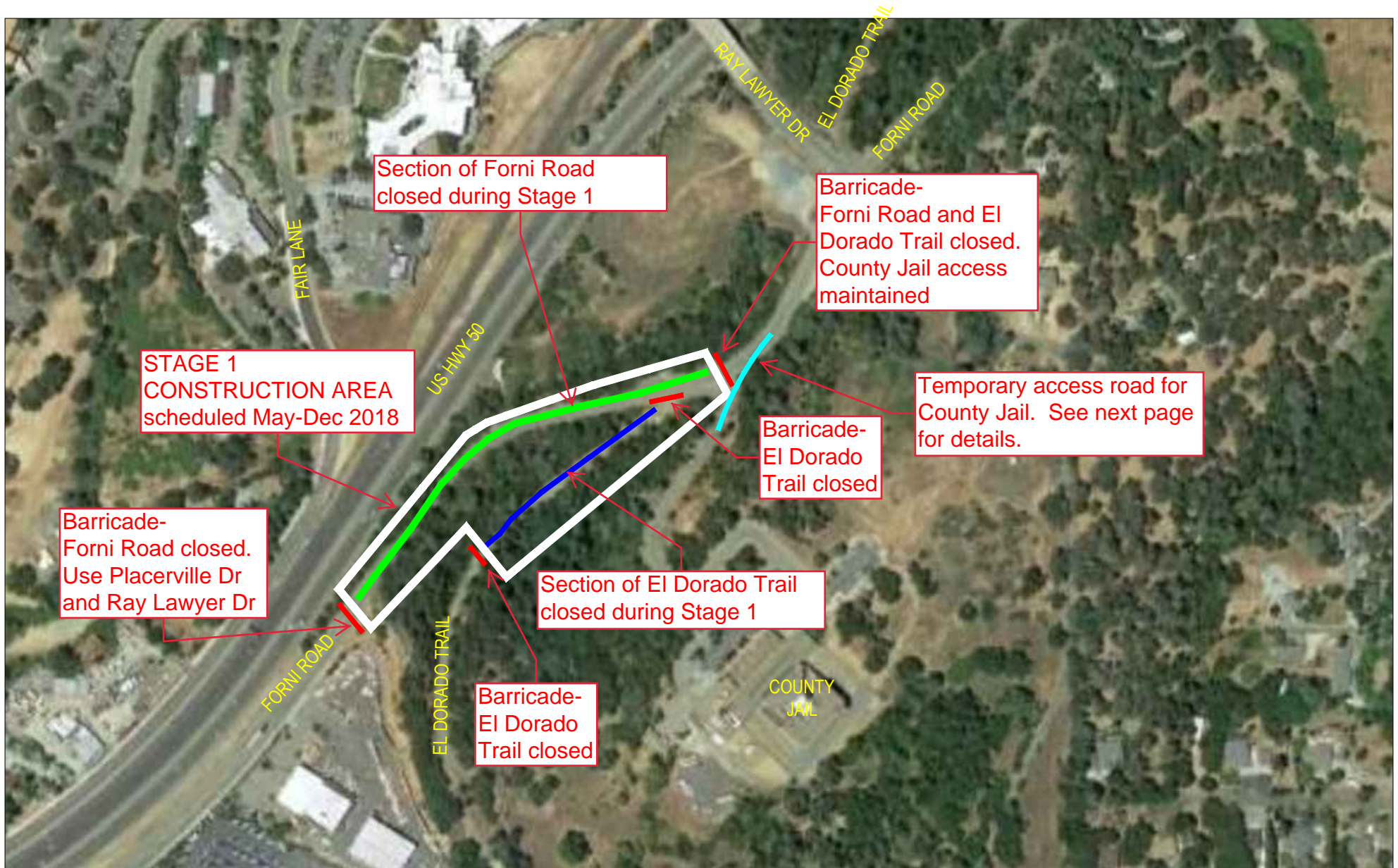
Pictured: New Bus Pad Near Park and Ride Lot



Thank you!

Western Placerville Interchanges Phase 2 Project - CIP #41828

Site Map - Beginning August 8



Western Placerville Interchanges Phase 2 Project - CIP #41828

STAGE 1B - COUNTY JAIL ACCESS - SCHEDULED MID-AUGUST THROUGH OCTOBER 2018

