

WESTERN PLACERVILLE INTERCHANGES

PHASE 2 PROJECT

CIP # 41828



CONSTRUCTION UPDATE #16

September 25th, 2018

Hi Everyone!

This is our sixteenth update to the community regarding the Western Placerville Interchanges Phase 2 Project. Construction began the first week in February, and these updates will continue to be sent via email to interested parties and posted on the City of Placerville's website to keep the community up-to-date on the status of this project. Thanks in advance for everyone's understanding and patience during construction.

Previous Period

- Curb, gutter & sidewalk was formed and poured along Forni Road.
- Lean concrete base and concrete bus pad were formed and poured.
- Concrete barrier was constructed on top of the retaining wall on Forni Road.
- Aggregate base was placed in Forni Road beginning on the west end of Stage 1 near Diamond Pacific.
- Storm drain installation; trenching and installation of new EID water main.
- Work on water pollution control measures and adherence to the project SWPPP.
- Forni Road was closed beginning April 30th between Diamond Pacific and the County Jail driveway. See attachment for details.
- Complete access was maintained on the El Dorado Trail through May 8, 2018. The El Dorado Trail was closed on May 9th. See attachment for details.

Current Period

- Curb, gutter & sidewalk was formed and poured along Forni Road.
- Comcast CATV switch over was completed on September 21, 2018.
- Mass grading. Specifically, at Forni Road/County Jail driveway intersection.
- Testing and disinfection of EID water main and County Jail water service line was completed.
- Electrical work along Forni Road and in future park and ride lot.
- Aggregate base placement on Forni Road and County Jail driveway was completed.
- Storm drain installation continued.
- Trenching and installation of new EID water main and water service was completed for Stage 1.
- Trenching and installation of new County Jail water service line was completed.
- Pipe abandonment was completed on EID water main that is no longer in service.
- Work on water pollution control measures and adherence to the project SWPPP continued.
- Paving of Forni Road between Diamond Pacific and County Jail driveway.
- Paving of western half of County Jail driveway.
- Paving of El Dorado County Trail Stage 1. See attachment for details.
- **Businesses near the project site and their access to Forni Road remain open and will continue to remain open during all stages of construction.**

Following Period

- Grading will continue; specifically, the eastern half of the County Jail driveway.

Thank you!

WESTERN PLACERVILLE INTERCHANGES

PHASE 2 PROJECT

CIP # 41828



- Striping Forni Road between Diamond Pacific and County Jail driveway.
- In the beginning of October, access to the County Jail will be switched to the newly constructed Forni Rd west of the County Jail driveway (Stage 2). Grading work will progress on Forni Rd east of the County Jail driveway to just west of Ray Lawyer Drive, but the intersection of Ray Lawyer and East Forni Rd will remain open.
- Storm drain installation will continue.
- Erosion and sediment control measures will be implemented in anticipation of winter weather and as required per the project SWPPP.
- **Access to the County Jail will be preserved at all times.** See attachments for details.

Important Information

Remember that the El Dorado Trail is closed, with no through access to Forni Rd., however access to the County Jail (from Ray Lawyer Drive and East Forni Rd) will be maintained at all times.

Stage 1B construction began on 8-8-18. See attachments for details.

Additional traffic control may be necessary outside of stage 1 limits, so keep an eye out for shoulder and/or lane closures east of the County Jail driveway and look for signage showing planned closures and detours. Please see attachments for Stage 1 closure limits and dates and plan your travel routes accordingly. Pedestrian and bicycle traffic on the El Dorado Trail are encouraged to use alternate routes.

Stay tuned and alert for all construction traffic safety signage, **Slow for the Cone Zone!** We want everyone to make it home to their loved ones at the end of the day.

***FUN FACT – Did you know this project includes connecting improvements to the El Dorado Trail system? With the construction of a Class I path connecting from the Missouri Flat Road trailhead near Mother Lode Drive up to the recently completed (2015) El Dorado Trail segment at Ray Lawyer Drive and Forni Road, this project includes substantial pedestrian and bicycle improvement. The days of walking along the dirt shoulder on Forni Road directly adjacent to live traffic are over. A win for public safety! Learn more at the project website:*

<https://www.cityofplacerville.org/westernplacerville-interchanges-phase-2-cip-407051>

Contacts

Howard Zabell, Resident Engineer	Drake Haglan	(916) 363-4210	hzabell@drakehaglan.com
Elias Travis, Assistant RE	R.E.Y. Engineers	(916) 206-7912	etravis@reyengineers.com
Rebecca Neves, City Engineer	City of Placerville	(530) 642-5250	rneves@cityofplacerville.org

Thank you!

WESTERN PLACERVILLE INTERCHANGES PHASE 2 PROJECT CIP # 41828



Pictured Below: El Dorado Trail (Class 1 Path) Crossing Future Ray Lawyer Dr. Before and After Paving



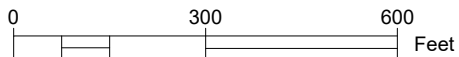
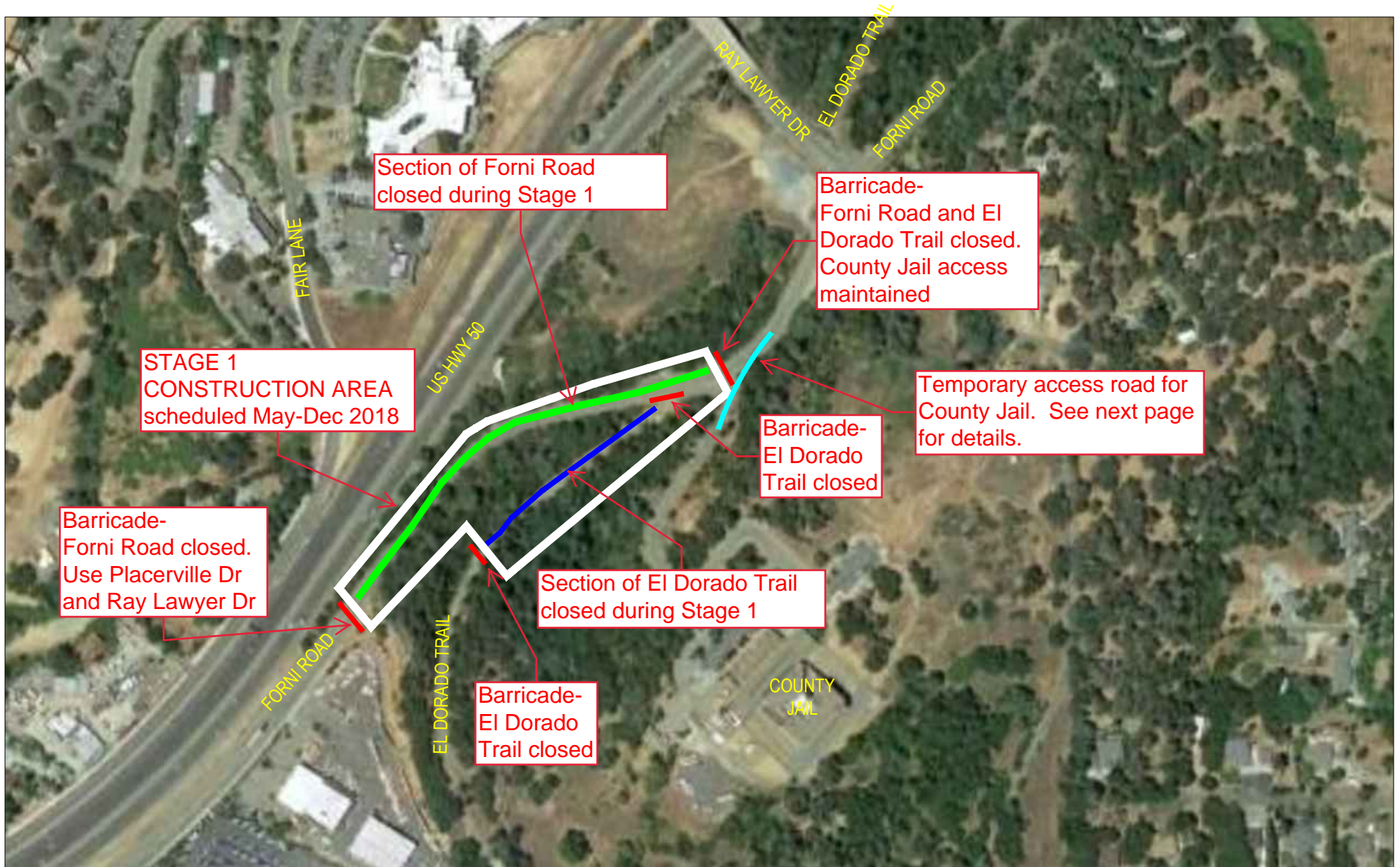
Pictured Below: Forni Road Paving



Thank you!

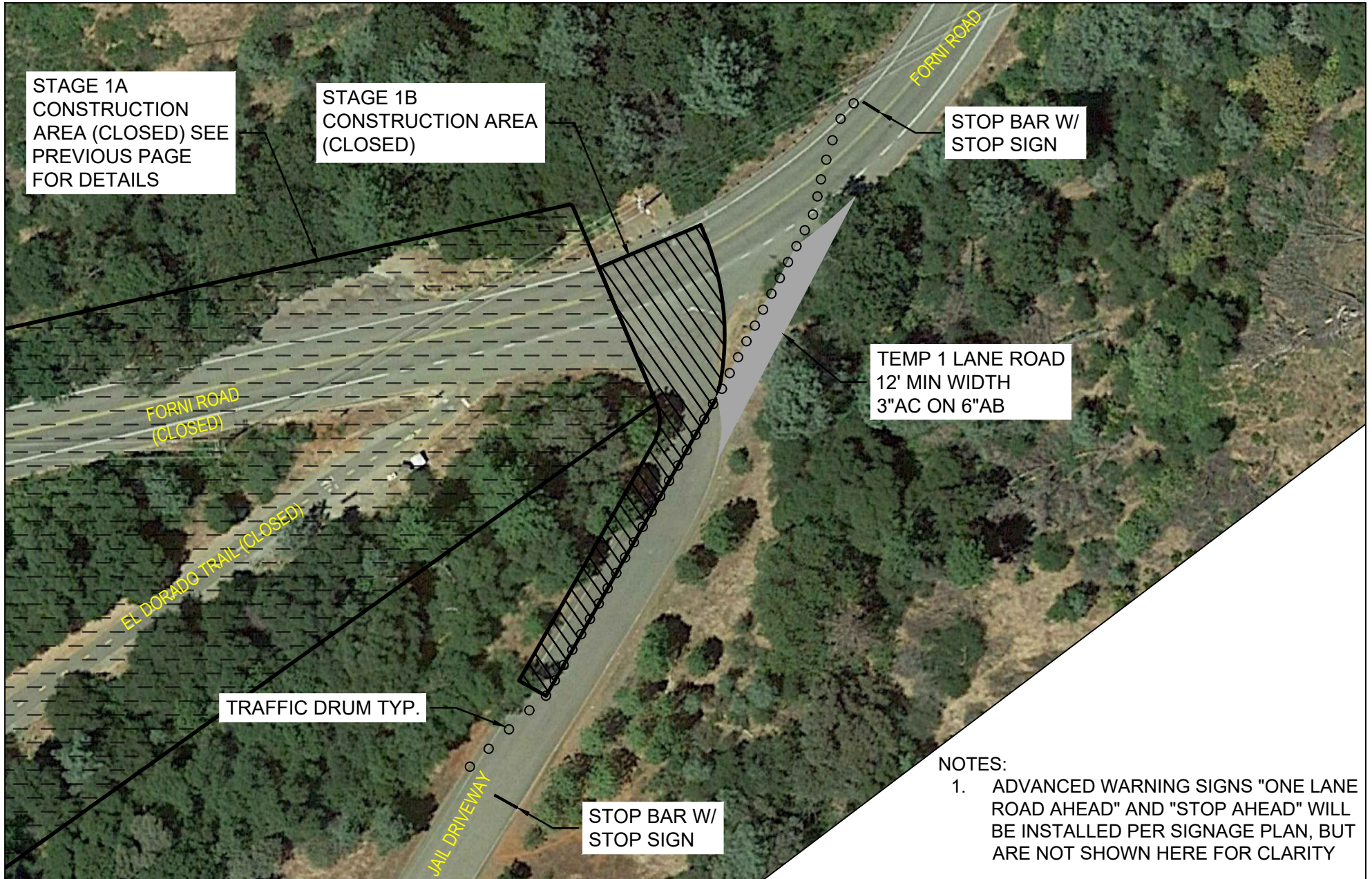
Western Placerville Interchanges Phase 2 Project - CIP #41828

Site Map - Beginning August 8



Western Placerville Interchanges Phase 2 Project - CIP #41828

STAGE 1B - COUNTY JAIL ACCESS - SCHEDULED MID-AUGUST THROUGH OCTOBER 2018



NOTES:

1. ADVANCED WARNING SIGNS "ONE LANE ROAD AHEAD" AND "STOP AHEAD" WILL BE INSTALLED PER SIGNAGE PLAN, BUT ARE NOT SHOWN HERE FOR CLARITY

