

WESTERN PLACERVILLE INTERCHANGES PHASE 2 PROJECT

CIP # 41828



CONSTRUCTION UPDATE #17

October 9th, 2018

Hi Everyone!

This is our seventeenth update to the community regarding the Western Placerville Interchanges Phase 2 Project. Construction began the first week in February, and these updates will continue to be sent via email to interested parties and posted on the City of Placerville's website to keep the community up-to-date on the status of this project. Thanks in advance for everyone's understanding and patience during construction.

Previous Period

- Curb, gutter & sidewalk was formed and poured along Forni Road.
- Forni Road paving from Diamond Pacific to County Jail driveway intersection.
- Comcast CATV switch over was completed on September 21, 2018.
- Mass grading. Specifically, at Forni Road/County Jail driveway intersection.
- Testing and disinfection of EID water main and County Jail water service line was completed.
- Electrical work along Forni Road and in future park and ride lot.
- Aggregate base placement on Forni Road and west side of County Jail driveway was completed.
- Storm drain installation.
- Trenching and installation of new EID water main and water service was completed for Stage 1.
- Trenching and installation of new County Jail water service line was completed.
- Pipe abandonment was completed on EID water main that is no longer in service.
- Work on water pollution control measures and adherence to the project SWPPP.
- Forni Road was closed beginning April 30th between Diamond Pacific and the County Jail driveway. See attachment for details.
- Complete access was maintained on the El Dorado Trail through May 8, 2018. The El Dorado Trail was closed on May 9th. See attachment for details.

Current Period

- Curb was formed and poured in the future park and ride lot.
- Grading continued on the eastern half of the County Jail driveway.
- Aggregate base placement and paving of eastern half of County Jail driveway.
- Striping Forni Road and El Dorado Trail between Diamond Pacific and County Jail driveway.
- On September 27th, access to the County Jail was switched over to the western half of the County Jail driveway. See attachment for details.
- Storm drain installation continued.
- Erosion and sediment control measures were implemented in advance of wet weather and as required per the project SWPPP.
- **Businesses near the project site and their access to Forni Road remain open and will continue to remain open during all stages of construction.**

Following Period

- Signage will be placed prior to beginning Stage 2 construction.
- The remainder of Forni Road between Diamond Pacific and County Jail driveway will be striped.
- The retaining wall along Forni Road will be painted.
- Mass grading and aggregate base will be placed in future park and ride lot.

Thank you!

WESTERN PLACERVILLE INTERCHANGES PHASE 2 PROJECT

CIP # 41828



- Curb, gutter, sidewalk, and AC dike will be formed and poured in the future park and ride lot, along Forni Road, and along County Jail Driveway.
- Erosion and sediment control measures will be implemented and all inactive areas will be winterized as required per the project SWPPP.
- In Mid- October, access to the County Jail will be switched over to the newly constructed Forni Rd west of the County Jail driveway so that Stage 2 construction can begin. Grading work will progress on Forni Rd east of the County Jail driveway to just west of Ray Lawyer Drive, but the intersection of Ray Lawyer and East Forni Rd will remain open. See attachment for details.
- **Access to the County Jail will be preserved at all times.** See attachments for details.

Important Information

Remember that the El Dorado Trail is closed, with no through access to Forni Rd., however access to the County Jail (from Ray Lawyer Drive and East Forni Rd) will be maintained at all times.

Stage 1B construction is complete. Stage 1C construction began 9-27-18. See attachments for details.

Additional traffic control may be necessary outside of construction limits, so keep an eye out for shoulder and/or lane closures outside of the current closure and look for signage showing planned closures and detours.

Please see attachments for Stage 1 & Stage 2 closure limits and dates and plan your travel routes accordingly. Pedestrian and bicycle traffic on the El Dorado Trail are encouraged to use alternate routes.

Stay tuned and alert for all construction traffic safety signage, **Slow for the Cone Zone!** We want everyone to make it home to their loved ones at the end of the day.

***FUN FACT – Did you know that this project included the use of rubberized asphalt manufactured from waste tires that would have otherwise been diverted to a landfill? Forni Road was recently paved from Diamond Pacific to the County Jail driveway utilizing this product that not only implements responsible recycling, but has been shown to reduce traffic noise on the road. The City received a rubberized pavement grant from the State Department of Resources Recycling and Recovery (CalRecycle) to help fund the use of recycled-content surfacing product on this project and many others within the City.*

In Mid- October, access to the County Jail will be switched over to the newly constructed Forni Rd. Forni Rd will then be closed between Ray Lawyer Dr. and the County Jail driveway. The County Jail and local businesses will be accessed via Forni Road from the west. See attachment for details.

Contacts

Howard Zabell, Resident Engineer	Drake Haglan	(916) 363-4210	hzabell@drakehaglan.com
Elias Travis, Assistant RE	R.E.Y. Engineers	(916) 206-7912	etravis@reyengineers.com
Rebecca Neves, City Engineer	City of Placerville	(530) 642-5250	rneves@cityofplacerville.org

Thank you!

WESTERN PLACERVILLE INTERCHANGES PHASE 2 PROJECT

CIP # 41828



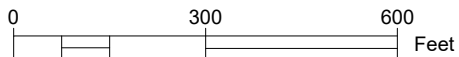
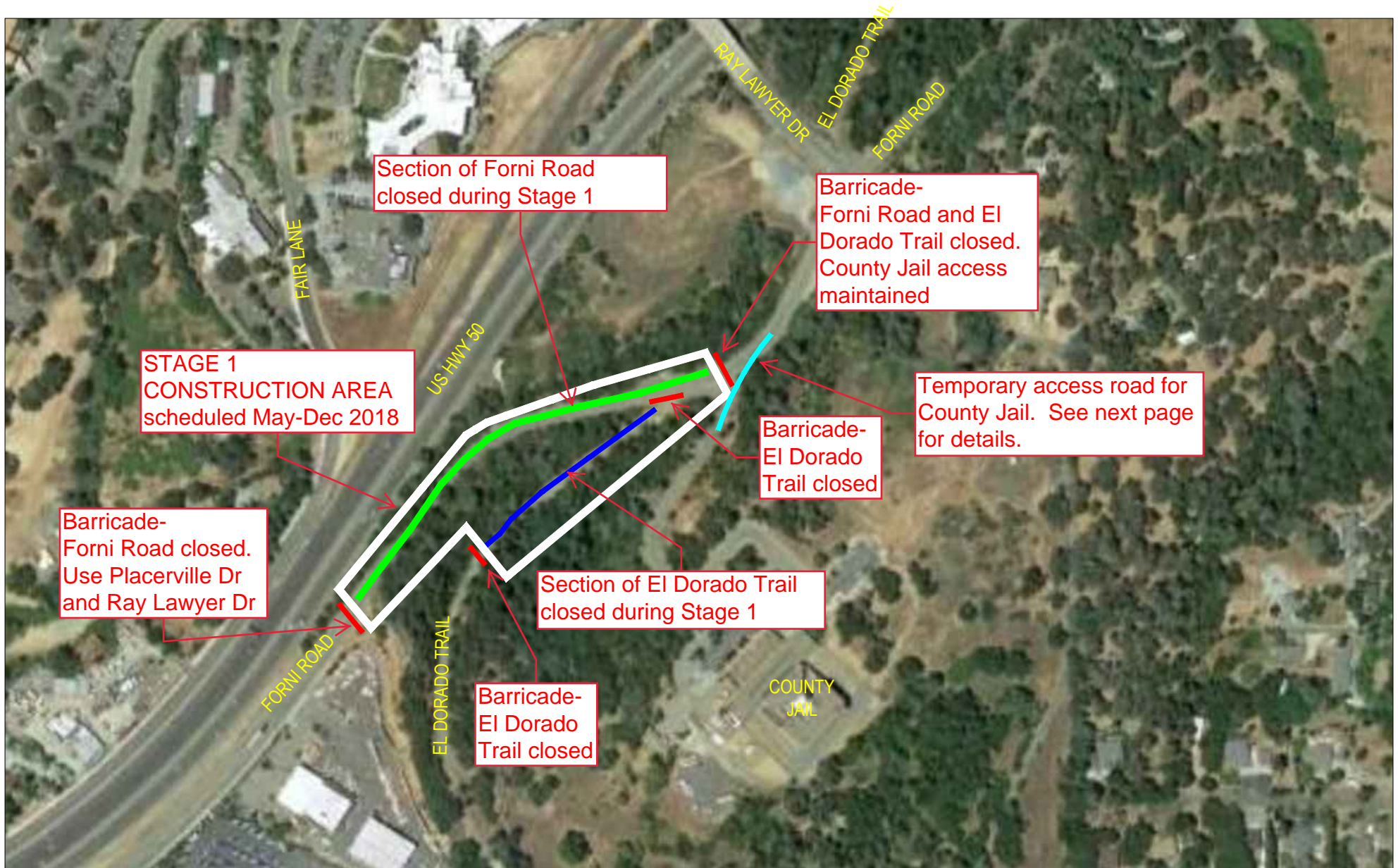
Pictured: Paving Eastern Half of County Jail Driveway



Thank you!

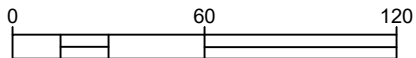
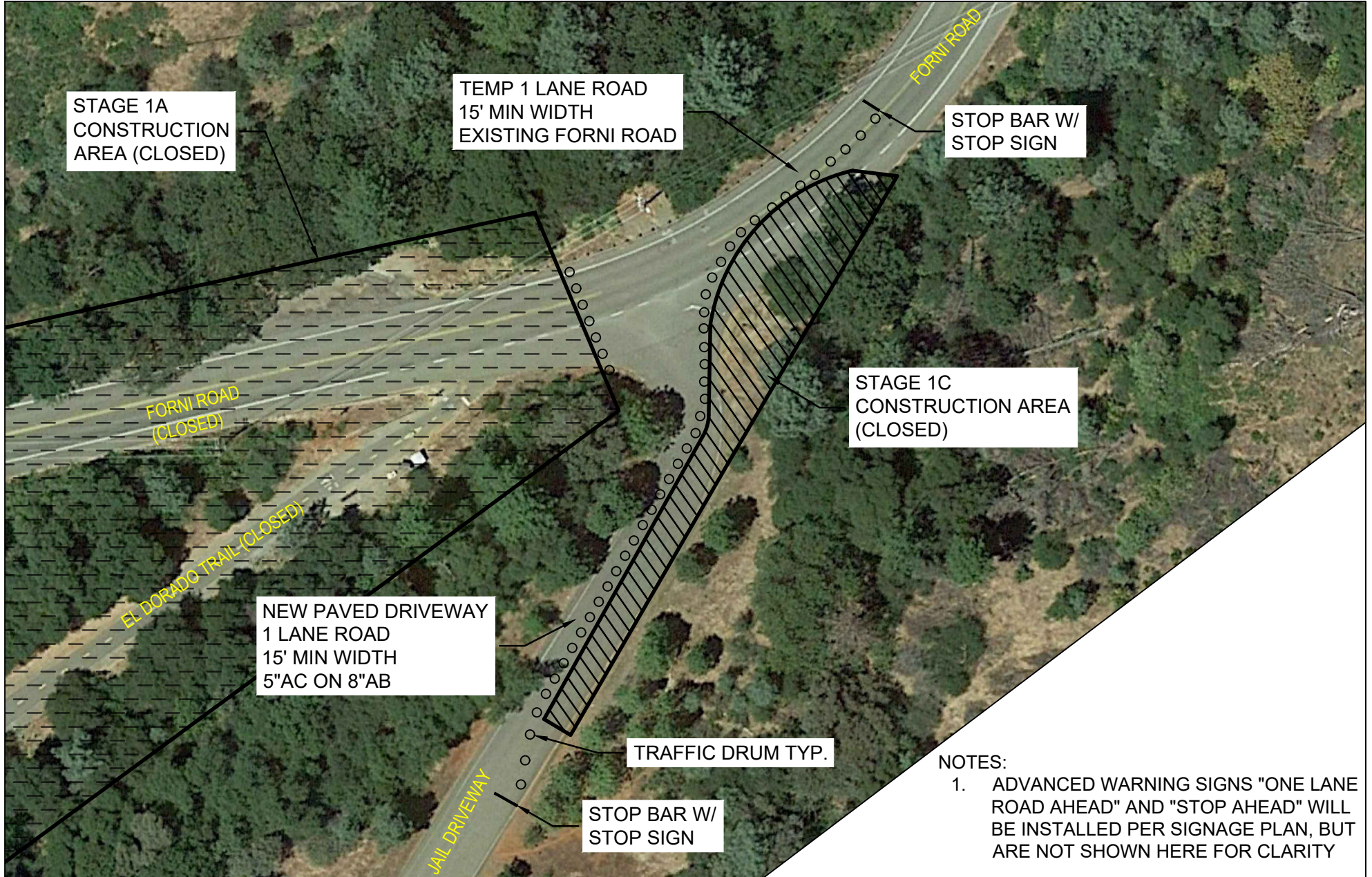
Western Placerville Interchanges Phase 2 Project - CIP #41828

Site Map - Beginning September 27



Western Placerville Interchanges Phase 2 Project - CIP #41828

STAGE 1C - COUNTY JAIL ACCESS - SCHEDULED LATE SEPTEMBER THROUGH MID OCTOBER 2018



Western Placerville Interchanges Phase 2 Project - CIP #41828

Site Map - Beginning Mid-October 2018



Section of Forni Road closed during Stage 2

Barricade-Forni Road closed. Use Ray Lawyer Dr, Placerville Dr & Forni Road

****STAGE 2 CONSTRUCTION AREA** scheduled Oct 2018 - summer 2019

Barricade-El Dorado Trail closed

Section of El Dorado Trail closed during Stage 2

Barricade-Forni Road and El Dorado Trail closed. County Jail access maintained

Barricade-El Dorado Trail closed

NOTE:
**Stage 2 Construction is scheduled to move into the intersection of Forni Road/Ray Lawyer Dr in the spring of 2019. Once this occurs, the intersection will be closed until summer 2019.

